

United States Perfins 1902 Series - Checklist

General

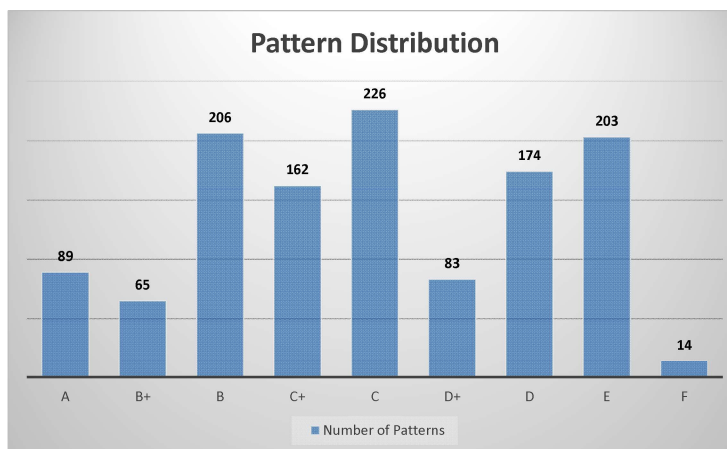
The 1902 Series definitive series was in use when perfins were authorized for use in April 1908 with the earliest recorded use on May 22, 1908. Perfins on the 1902 Series issues are highly desired items. The "1902 Series Perfin Checklist" may be used to identify all currently know perfin patterns on each denomination of this series.

Pattern Distribution

There are **1,222** known perfin patterns on '1902 Series' U.S. stamps. Included in the count are the original and revised 2 cent Washington stamps, the 1917 (Perf. 10) \$2 and \$5 issues, 10 letter varieties of pattern N036.5I (NBREPUBLIC) and one personal pattern, JP115. The graph below shows the number of perfin patterns for each rating.

Number of Patterns
for Each Rating

Pattern Rate	No. of Patterns	%
A	89	7%
B+	65	5%
B	206	17%
C+	162	13%
C	226	18%
D+	83	7%
D	174	14%
E	203	17%
F	14	1%
Total:	1222	100%

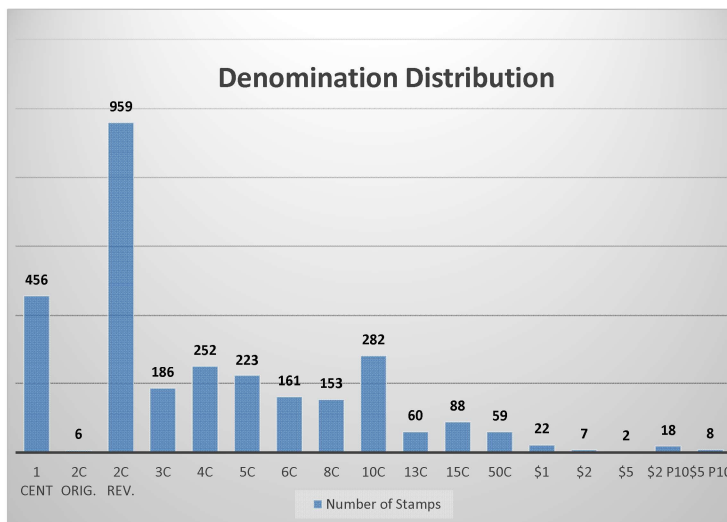


Denomination Distribution

When considering all possible combinations of perfin patterns and the number of denominations known for each pattern, there are **2,942** possibilities. For example, the 1 cent is known to exist with 456 different patterns, the 2 cent (revised) with 959 patterns, etc.

Number of Stamps
for Each Denomination

Stamp Denom.	No. of Patterns	%
1 cent	456	15%
2c orig.	6	0.2%
2c rev.	959	33%
3c	186	6%
4c	252	9%
5c	223	8%
6c	161	5%
8c	153	5%
10c	282	10%
13c	60	2%
15c	88	3%
50c	59	2%
\$1	22	0.7%
\$2	7	0.2%
\$5	2	0.1%
\$2 P10	18	0.6%
\$5 P10	8	0.3%
Total:	2942	100%



Revision	Date	Description of Changes	By
New	6/8/2010	Original Document	Steven Endicott
Rev. 1	12/1/2018	Reformatted document. Updated to the 2018 "Catalog of United States Perfins". Added 39 patterns and 148 denominations. Included 2c (original) Washington.	Bob Hodges

United States Perfins 1902 Series - Checklist

Pattern	Rate	1902 Series Perfins - Perf. 12														Perf. 10		
		1c	2c orig.	2c rev.	3c	4c	5c	6c	8c	10c	13c	15c	50c	\$1	\$2	\$5	\$2	\$5
A010	D+			X														
A011	D	X		X				X		X		X	X					
A012.5	A	X																
A013	B+			X														
A024	C+							X										
A029	B	X		X				X		X								
A032	D	X		X		X	X	X		X								
A035A	A			X														
A037	D+	X		X		X		X		X								
A038	D			X														
A039	D	X																
A040	E	X		X	X	X				X	X	X						
A042	C	X		X		X	X											
A046	D+	X									X							
A048	C	X				X	X											
A051	D+			X		X												
A053	C			X		X				X			X					
A056.5	D			X		X		X		X			X					
A060	E			X		X	X	X	X	X	X	X	X		X	X	X	X
A064	D	X		X	X	X		X	X			X	X					
A073	D+				X													
A075	D				X													
A076	E	X		X		X	X											
A087-2	E	X		X	X	X	X	X	X	X			X					
A087-3	E				X			X	X									
A087-4	E			X		X		X	X	X								
A087-8	C	X																
A094	E	X		X		X			X			X	X					
A095	D+			X														
A097	C+			X	X													
A102.1	E	X		X		X		X	X									
A104	B+			X														
A105	B+							X										
A109	B+			X														
A117	C											X						
A121-0	C+			X														
A121-1	D			X														
A132	C+			X					X									
A136	C+	X		X						X								
A148	B+			X														
A149	D			X	X													
A157	B+			X														
A162	D+			X		X			X	X								
A166	D			X		X												
A167.3	A			X														
A173.7	A			X														
A174	B+			X														
A179	D+			X			X	X										
A179.5	C			X														
A182	C	X		X	X													
A182.5	B+			X														
A197	C			X			X											
A202.5	A			X														
A203.5	E			X					X									
A210	C	X		X			X											
A214	B			X														
A218	C	X			X													
A221-01A	E	X		X	X	X		X	X	X		X						
A221-01B	C	X																
A221-26	E	X																
A228	B+			X														
A232	A					X												

United States Perfins 1902 Series - Checklist

		1902 Series Perfins - Perf. 12														Perf. 10		
Pattern	Rate	1c	2c orig.	2c rev.	3c	4c	5c	6c	8c	10c	13c	15c	50c	\$1	\$2	\$5	\$2	\$5
A241	D	X																
A243	C			X														
A250	C+			X						X								
A250.5	A			X														
A252.5	A			X														
A254A	C+			X		X				X								
A255	A			X														
A255.5	B+			X														
A262	D			X														
A264	D+	X		X														
A265A	B	X				X	X		X	X			X					
A267A	E	X		X	X	X		X	X	X								
A268	E	X		X	X	X	X	X		X		X						
A270-01	E	X	X		X			X		X								
A270-02	E			X														
A270-04	A			X														
A270-05	B			X														
A270-13	B			X														
A270-17.5	A			X														
A276	C			X														
A278	C			X														
A280	E			X						X								
A284	C			X		X			X	X								
A284.5	E									X								
A288	B			X														
A296	B+			X								X						
A304	C+			X		X												
A306	C+			X						X								
B002	D			X														
B013	B+			X														
B015	E							X		X								
B019	C			X		X												
B020	B+			X														
B026	C			X														
B027	C+			X														
B029	D	X		X			X					X	X					
B040	D			X	X	X	X	X	X	X								
B042	E			X														
B045	E				X					X								
B048	C+	X		X					X									
B049	D	X		X														
B052	D						X											
B053	D	X		X	X	X	X	X			X	X						
B055	A			X														
B058	C	X		X	X		X	X	X									
B060	D			X	X	X	X	X										
B078	D								X									
B079	D					X	X											
B081A	D						X											
B082	D+			X						X								
B085	B+	X																
B087	C	X																
B088	B			X														
B092	C	X		X														
B094	B			X														
B098	E	X		X					X	X								
B104	C	X																
B110	C+	X		X	X		X											
B113	B	X		X		X												
B115	C+	X		X														
B118	E	X		X	X	X		X		X								
B125	B					X												

United States Perfins 1902 Series - Checklist

Pattern	Rate	1902 Series Perfins - Perf. 12														Perf. 10		
		1c	2c orig.	2c rev.	3c	4c	5c	6c	8c	10c	13c	15c	50c	\$1	\$2	\$5	\$2	\$5
B126	D	X		X					X									
B127	C+							X										
B139	E	X		X			X								X			
B142	A	X		X					X				X					
B145	E				X		X					X		X			X	
B149	B			X														
B150	C	X						X										
B151	C+			X				X	X									
B152	D	X		X		X	X	X		X								
B155	C+			X														
B165	E			X														
B167	C	X		X	X					X								
B169	B			X														
B170	C+			X														
B171	B	X		X			X					X						
B185	C+	X		X		X	X	X	X	X								
B186A	A			X														
B187	C			X														
B194	C	X		X			X	X										
B196	D	X																
B199.3	C+			X														
B202	D	X		X		X												
B203	D+			X														
B215.5	A	X																
B219	C			X														
B228.5	C+	X		X	X	X	X	X	X	X	X							
B229	D	X		X			X	X										
B233	D+			X														
B235.5	C			X														
B237	E	X																
B241	E	X		X														
B249	E							X										
B250	C+			X														
B255.5	A			X														
B256	C+	X		X														
B258	E			X														
B266	C			X	X		X				X							
B267	B+	X		X			X											
B268	B	X		X														
B270	C			X		X		X										
B277	E	X		X	X		X			X								
B287	C+			X														
B290	D			X														
B293	C+	X				X												
C003	D			X														
C006	C			X		X		X										
C011	C	X						X		X								
C015	D+			X														
C021	C				X													
C022.1	C			X		X												
C022.3	A			X														
C026	B	X		X	X													
C032	C+			X														
C034	C+	X		X						X								
C036	C+	X																
C038	B	X		X			X											
C043	E	X		X	X	X												
C046	C			X				X										
C047	B	X			X	X		X										
C054	C+	X		X	X			X		X								
C063	E	X		X			X			X								
C065	C	X		X	X		X											

United States Perfins 1902 Series - Checklist

Pattern	Rate	1902 Series Perfins - Perf. 12															Perf. 10	
		1c	2c orig.	2c rev.	3c	4c	5c	6c	8c	10c	13c	15c	50c	\$1	\$2	\$5	\$2	\$5
C071	C+	X		X	X	X												
C076	D	X		X														
C080	B			X		X												
C091	C+			X														
C096	C+			X	X	X												
C102A	B	X		X														
C105	C+	X		X	X				X									
C108	B			X														
C111	E			X														
C118	C	X		X			X	X		X								
C122	C+	X		X														
C123	C			X														
C125	C	X		X	X	X					X							
C127	B+	X		X														
C130	B	X						X										
C135	C+			X		X		X		X								
C143	B			X														
C145	C+	X		X														
C160	B			X														
C161.5	B			X														
C169	B			X														
C177.5	C+			X		X						X						X
C177.8	D+	X																
C177.8A	B	X		X			X											
C182	D	X		X														
C198	E			X	X		X				X							
C204.3	B+			X														
C207	D+	X		X	X		X				X							
C216	E	X						X										
C220	B			X		X												
C221	D+			X														X
C228	E				X	X		X	X	X								
C230	C+			X		X		X	X	X								X
C231	C								X									
C236	F																	X
C248A	B			X	X	X			X	X								
C250A	C+	X		X		X												
C255	B			X														
C264	E			X		X		X			X							
C266	C			X														
C267	C	X		X			X											
C273	B					X												
C278	E			X														
C283	C+	X		X														
C284	E	X		X	X	X				X		X						
C288	D	X		X	X	X				X								
C289	C			X														
C290	E			X	X			X	X									
C293	B	X						X	X									
C300	C+			X														
C303	B+			X								X						
C310	B+			X														
C311	D					X			X									
C312	D	X		X		X				X								
C317	D+			X														
C319	C	X		X		X												
C320	B							X										
C322	C+			X	X													
C339	B			X														
C344	C+			X														
C347	E			X	X	X		X	X									
C349	B			X														

United States Perfins 1902 Series - Checklist

Pattern	Rate	1902 Series Perfins - Perf. 12														Perf. 10		
		1c	2c orig.	2c rev.	3c	4c	5c	6c	8c	10c	13c	15c	50c	\$1	\$2	\$5	\$2	\$5
C351	C	X		X					X									
C354	C+	X		X				X										
C355	C+			X														
C356-01	E	X		X	X	X			X	X			X					
C356-14	E			X		X												
C358	D+			X														
C360	E			X														
C362	E	X		X														
C382	E	X		X	X			X										
C385	C+			X			X		X	X								
C386	D			X			X	X		X								
C390	C	X		X						X								
C394	D										X							
C402	E				X													
C405.5	A			X														
C407	D+	X		X	X	X						X	X					
C409	D										X							
C411	B+			X														
C415	D+			X						X								
C416	E			X						X								
C417	E															X	X	X
C418	E	X		X														
C419	D			X	X													
C420	D			X			X											
C421	C			X														
C422	E	X		X														
C423	D			X	X	X												
C424	E			X														
C425	D			X														
C427	C			X			X											
D003	E			X				X										
D007	B	X																
D014	B			X														
D016	C	X		X						X								
D019	B			X														
D021	E	X		X	X													
D027	B			X														
D027.5	A			X						X								
D028	D			X			X			X								
D030	B+			X														
D030A	B+			X														
D036	E			X			X											
D041.7	B	X		X			X											
D051	B+	X																
D055	C			X														
D059	C	X																
D061	E	X								X								
D062	B+	X			X													
D064	B+	X				X												
D073	C+			X														
D076	C			X														
D079	C+			X														
D080	B	X																
D086	B	X																
D092	C			X	X													
D094	D			X				X										
D095	C			X	X			X	X	X								
D096	D+			X	X					X								
D112	B			X														X
D119	E			X	X	X				X								X
D124	E									X								
D129	E	X		X	X	X	X	X	X	X								

United States Perfins 1902 Series - Checklist

Pattern	Rate	1902 Series Perfins - Perf. 12															Perf. 10	
		1c	2c orig.	2c rev.	3c	4c	5c	6c	8c	10c	13c	15c	50c	\$1	\$2	\$5	\$2	\$5
D136	D+	X		X	X	X	X	X	X	X	X	X						
D137	C			X														
D138	B			X														
D141	D+	X		X	X			X		X								
D146	D						X											
D154	E												X					
D155	E			X		X				X								
E005	B	X																
E006	B			X														
E007	C			X														
E008	C+			X	X													
E013	A			X														
E013.9	A			X														
E019	B			X														
E022	B+	X		X														
E026	B			X														
E032	B			X														
E033	B+	X		X														
E034	D			X														
E037	C+							X										
E044	B+			X														
E044A	B+			X														
E048	C+			X														
E050	E	X		X														
E051.5	A			X														
E055	C+	X		X														
E057	D+			X														
E070	E	X		X														
E077	C				X	X												
E084	B			X														
E085	C+			X				X										
E087.5	B+			X														
E090A	A			X														
E096A	C			X														
E098	D+				X													
E101A	D				X	X												
E103	E		X															
E110	C	X		X														
E117	E	X		X		X												
E121	B			X														
E131	C+										X							
F001	E			X														
F004	E			X			X											
F008	E	X		X		X												
F016	A			X														
F019	C+	X		X														
F020.2	A	X																
F020.5	A	X																
F022	D+			X														
F025	D			X														
F025.5	C+			X		X												
F039	C+	X		X														
F042	C			X	X	X		X				X						
F042.5	D			X														
F044	B							X										
F046	B	X		X	X													
F049.5	A	X		X														
F050	C+			X														
F054	B			X														
F058	C+			X														
F058A	A			X														
F063	B			X														

United States Perfins 1902 Series - Checklist

Pattern	Rate	1902 Series Perfins - Perf. 12															Perf. 10	
		1c	2c orig.	2c rev.	3c	4c	5c	6c	8c	10c	13c	15c	50c	\$1	\$2	\$5	\$2	\$5
F071	E	X		X	X				X									
F072	D	X		X			X		X			X						
F073	E	X		X		X		X	X									
F090	E											X						
F092	C+	X		X		X	X											
F096	E	X		X	X	X			X									
F102	B			X														
F103	C+	X		X		X												
F109	C+			X														
F110A	E			X					X									
F114.5	C	X		X					X									
F118	C			X		X												
F127	E			X		X	X	X	X						X			
F129	C			X		X	X		X									
F135	C+					X	X											
F136	D+						X											
F138	D			X			X	X	X									
F142	D			X							X							
F145	D	X		X		X												
F147	D	X		X														
F151	B			X														
F158	D																X	
F161	F																X	X
F163	D+														X		X	X
F166	E														X		X	X
F167	E																X	X
F170	E														X		X	X
F183	E																X	X
F186	D			X														
F194A	A	X		X														
F197	D			X		X		X	X	X			X					
F199	C	X		X														
F203	C								X									
F204	D					X		X	X	X								
F206	B	X		X		X				X								
F207	C			X														
F211	C+			X														
F214	C+			X														
F219	E			X														
F223	D+			X		X												
F224	C	X		X														
F228	B	X		X														
F231	C	X		X				X										
F234	E	X		X	X	X				X	X	X						
G001	A			X														
G007	C+	X		X														
G015	C			X														
G018	D			X				X										
G019	C			X	X				X			X						
G023	D			X	X		X	X	X									
G027	C+							X										
G029	B	X		X														
G032	D	X		X	X	X		X	X			X						
G040	B			X														
G040.1	C			X														
G041	B+	X		X														
G041.5	A			X														
G047	D	X		X	X	X			X									
G049	C	X		X	X	X	X	X	X	X	X							
G053	C+			X														
G053.5	A			X														
G058	B+			X														

United States Perfins 1902 Series - Checklist

Pattern	Rate	1902 Series Perfins - Perf. 12															Perf. 10	
		1c	2c orig.	2c rev.	3c	4c	5c	6c	8c	10c	13c	15c	50c	\$1	\$2	\$5	\$2	\$5
G062	D	X		X	X	X	X	X										
G064	B			X														
G067	D	X		X														
G068	C	X		X									X	X				
G072-01	E	X		X	X	X	X	X	X	X	X	X	X	X			X	
G072-01B	B	X		X	X		X			X		X	X	X				
G072-01C	E												X					
G072-02B	E	X				X						X	X					
G072-02C	C			X		X	X		X		X	X						
G072-07	E			X	X		X		X							X		
G072-08	E															X		
G072-09	E										X							
G072-10	E	X		X	X	X		X	X	X		X	X	X				
G072-14	E					X			X				X					
G072-18	E			X		X							X					
G072-21	E			X							X		X					
G072-23	E					X			X	X								
G072-24	A			X														
G072-26	E	X		X			X		X		X	X	X	X				
G072-29A	E	X		X	X	X	X		X	X	X	X	X	X				
G072-30	A					X												
G072-31	C													X				
G072-32	E	X		X					X		X	X	X					
G072-36	D	X		X	X	X	X	X	X		X	X	X	X				
G072-52	E												X					
G073	C+			X														
G076	E								X									
G082	C+			X	X													
G084.5	A	X																
G085	B+			X														
G091	F	X		X		X												
G097.5	A			X														
G101	E										X							
G104	D										X							
G105	A			X														
G105.5	B+			X														
G106	E					X			X									
G117A	A			X														
G118	D							X										
G137	C+	X		X		X	X	X	X									
G141	C+	X	X	X					X									
G146	C	X			X	X	X											
G151	C	X		X	X													
G160	C	X		X	X		X				X							
G161	B	X		X		X	X		X								X	
G164	C	X		X		X	X	X	X									
G166	D	X				X	X		X									
G169	B	X		X														
G171	B			X														
G179	C	X		X		X	X		X									
G189	D+			X		X	X											
G193	B	X																
G195	C	X		X														
G206	C+	X		X														
G209	E			X														
G212	C+			X														
H008	E											X						
H009	C+	X		X	X				X									
H014	C	X		X	X	X	X	X	X			X						
H015	E	X		X		X	X	X	X									
H018	D	X		X	X	X	X	X				X						
H021	C			X	X													

United States Perfins 1902 Series - Checklist

Pattern	Rate	1902 Series Perfins - Perf. 12														Perf. 10		
		1c	2c orig.	2c rev.	3c	4c	5c	6c	8c	10c	13c	15c	50c	\$1	\$2	\$5	\$2	\$5
H023	C	X		X					X									
H029	D	X		X	X	X		X	X									
H030	C+			X	X													
H031	C			X														
H036	D			X	X	X	X	X	X				X					
H043	B			X														
H044	B	X		X	X													
H051.5	A			X														
H052	B			X														
H054	C			X		X												
H069	D			X					X									
H073	E			X														
H075	C					X			X									
H077	C+			X														
H082	C	X				X												
H083	D	X		X	X	X	X	X	X			X						
H085.5	A	X																
H086	B			X														
H088	B						X											
H089	E	X		X	X			X	X									
H091	E	X		X	X	X	X	X	X									
H093	B			X	X													
H096	E			X														
H096.5	B	X		X														
H097.5	C			X														
H101	C+			X														
H102	A			X														
H109	C			X					X									
H113	B				X													
H116	C+	X			X	X												
H127	E	X		X	X	X		X	X	X	X							
H132	A			X														
H138	C			X	X													
H139	A			X														
H143	A			X														
H144	C+			X														
H144.5	A	X		X														
H145	B	X		X							X							
H149	C	X		X														
H155	B+			X														
H157	B			X							X							
H172	C	X		X								X						
H182	C	X		X			X											
H185.5	A	X		X	X				X									
H192	B			X		X				X								
H207	D	X		X		X			X				X					
H211	D	X		X	X	X			X									
H213	D			X														
H216	D			X														
H219	C+	X		X														
H222	C	X		X	X													
H226	B+			X														
H229	C			X														
H230A	A	X																
I009	D			X					X									
I016	D			X														
I017	C								X		X							
I021	E	X		X	X	X			X									
I024	B			X	X													
I024A	A			X														
I025	C+			X														
I031	D			X	X				X									

United States Perfins 1902 Series - Checklist

Pattern	Rate	1902 Series Perfins - Perf. 12															Perf. 10	
		1c	2c orig.	2c rev.	3c	4c	5c	6c	8c	10c	13c	15c	50c	\$1	\$2	\$5	\$2	\$5
I041	D	X		X	X	X	X	X	X	X								
I043.7-09	D		X															
I043.7C-03	C	X		X		X		X	X	X								
I043.7C-09	D+		X															
I047	B			X														
I049	B			X														
I051	C			X														
I053	D+			X			X											
I064	B	X		X	X													
I070	C			X									X					
I073	C			X														
I079	E			X														
I085	B			X														
I091.01	E	X		X	X			X	X	X	X							
I093	B	X		X		X												
I094	C	X																
I097	C	X		X	X													
I099	D	X		X	X	X	X			X			X					
I105	C	X		X														
I107	C	X		X														
I111	B			X									X					
I116	D+									X								
I120	B			X														
I123	D			X						X								
J003	B			X														
J004	C+			X														
J005	E				X													
J006	C+	X		X			X						X					
J008	E			X														
J013	D			X			X	X										
J021	D						X											
J040	B+			X														
J041	D					X												
J042	C					X												
J045	C+			X						X								
J048	C+			X														
J052	B			X														
J056A	F					X		X		X			X	X				
J056B	E					X		X	X	X					X			
J064	B			X														
J077	A	X																
J080	D					X				X			X					
J082	C			X		X												
J090.5	A			X														
J093	B			X														
J105.5	D						X											
J108.5	E			X	X													
J110	B			X														
J113	C			X														
J119	B			X														
J125	C			X	X	X												
J125.5	A			X														
J127	B			X														
J127.5	D			X														
J128	B	X		X														
J140	C+					X												
J141	D	X		X						X								
J146	C+	X																
J157	B+			X														
J158	C			X														
J159	C	X		X			X	X			X	X						
J166.5	C	X		X			X	X				X						

United States Perfins 1902 Series - Checklist

Pattern	Rate	1902 Series Perfins - Perf. 12														Perf. 10		
		1c	2c orig.	2c rev.	3c	4c	5c	6c	8c	10c	13c	15c	50c	\$1	\$2	\$5	\$2	\$5
J167	E			X														
J168	C+			X														
J179	E	X		X		X		X										
JP115	C			X														
K004	E	X		X			X			X								
K005	E	X																
K006	B			X														
K007	B	X		X	X				X	X								
K008	C								X									
K014	B+	X		X														
K019	D+	X		X														
K029	C			X				X	X									
K041	C+			X	X		X		X					X				
K047	C+	X		X	X	X	X		X	X	X	X						
K048	D						X				X		X					
K051	B			X														
K054.5	B			X														
K054.6	A			X														
K058	D+										X							
K068	D			X														
K069	D	X		X	X	X	X			X		X						
K070	B			X														
L003	C+			X														
L008	D+	X		X														
L009	B+			X														
L012	C+	X		X					X									
L014.5	A																	
L020.5	C	X		X														
L029	C			X														
L044	E			X		X												
L046	D+	X		X	X													
L047	B											X						
L048	B			X														
L055-01	E			X		X												
L055-10	C+			X		X												
L056.5	C			X						X	X							
L057	E										X							
L061	E	X		X		X				X	X							
L063	B			X														
L066	C	X		X		X												
L076	E	X		X		X	X			X	X							X
L090	B			X						X								
L100	D			X														
L118	E					X						X						
L119	B			X		X												
L120	D	X		X														
L128	D	X		X	X													
L133	C			X	X													
L134	D			X														
L135	C			X														
L138.5	B+			X														
L140	B			X				X										
L140.1	A			X														
L146	D	X		X		X	X											
L148	C			X														
L150	D+			X														
L154	C			X														
L156	E	X		X		X	X			X								
L159.5	B			X				X				X						
L162	C			X														
L173	B+	X		X	X													
L174	D	X		X	X	X												

United States Perfins 1902 Series - Checklist

Pattern	Rate	1902 Series Perfins - Perf. 12															Perf. 10	
		1c	2c orig.	2c rev.	3c	4c	5c	6c	8c	10c	13c	15c	50c	\$1	\$2	\$5	\$2	\$5
L177	C+	X			X			X			X	X						
L180	D					X												
L184	D+	X										X						
L185	D	X		X														
L187	E	X		X	X	X	X	X	X	X								
L187.5	E					X												
L189	C+			X														
M004	B+			X														
M005	C			X														
M008.7	E										X							
M009	F										X							
M015	C+	X		X														
M024	A			X														
M025	A	X		X														
M025.5	A			X														
M026	C+			X		X	X											
M034	D+			X	X													
M045	B			X														
M051	D+									X								
M054	C					X			X									
M055	C	X		X		X												
M067	C			X														
M089	C+			X							X							
M090	E	X		X	X	X			X									
M100	B	X		X					X									
M102	C+	X		X	X				X									
M104	C+			X	X				X									
M106A	E			X														
M106B	E			X														
M107	A			X														
M109	B	X		X		X												
M119	B+	X		X														
M123	D	X		X														
M123.7	A			X														
M129	C+	X		X														
M130	D+			X														
M135	B			X														
M141.1	A			X														
M142.3	B+	X																
M144	B			X	X			X	X									
M152	E	X		X			X											
M153	D+	X		X	X	X	X		X	X	X							
M154	E						X											
M161	E			X	X	X	X	X				X						
M168	A	X		X														
M170	B			X														
M173	B+			X														
M177	C+	X		X				X										
M180	D			X	X		X		X									
M184	F																X	
M191	C			X								X						
M192	E	X		X														
M192A	B			X														
M193	C			X														
M195	C								X									
M196	C			X						X								
M197	C								X									
M198	C			X			X		X									
M203	C+			X														
M203A	A	X																
M204	D			X				X										
M208.5	B+			X		X												

United States Perfins 1902 Series - Checklist

Pattern	Rate	1902 Series Perfins - Perf. 12														Perf. 10		
		1c	2c orig.	2c rev.	3c	4c	5c	6c	8c	10c	13c	15c	50c	\$1	\$2	\$5	\$2	\$5
M215	D+	X		X														
M219	D+			X				X										
M225	A			X														
M234	C+	X																
M245	C+							X										
M251	A			X														
M271	C+	X		X														
M275.3	B	X		X														
M277	D+			X														
M279	D	X		X		X		X	X									
M280	B			X														
M285	C	X		X					X									
M300.5	C+			X														
M301	D			X														
N004.5	A			X														
N010	D+				X		X		X									
N032	D							X	X				X					
N036	C+	X		X	X	X	X	X	X	X	X	X						
N036.5I (Ltr N)	B			X														
N036.5I (Ltr B)	B	X		X														
N036.5I (Ltr R)	B			X					X									
N036.5I (Ltr E)	B			X					X									
N036.5I (Ltr P)	B			X					X									
N036.5I (Ltr U)	B			X														
N036.5I (Ltr B)	B			X														
N036.5I (Ltr L)	B			X					X									
N036.6I (Ltr I)	B			X														
N036.5I (Ltr C)	B	X		X														
N041	E	X		X	X	X	X	X	X	X			X	X				
N047	E			X		X		X	X									
N049	C+			X	X			X										
N054	E	X		X		X	X	X	X									
N059	C	X		X		X	X	X	X			X						
N067	E	X		X		X												
N068	B	X		X		X	X			X								
N071	C			X				X	X	X								
N076	D			X		X			X									
N077	E			X				X										
N082	B					X												
N085	B			X														
N096	C+					X				X		X						
N101	C	X		X					X									
N102	C	X		X					X									
N105	C			X														
N106	C			X														
N107	C+			X	X	X												
N113-05	C					X												
N113A-11	C					X												
N113Aa-00	D+						X	X										
N113Aa-01	D					X												
N113B-01	C									X								
N113B-03	D				X								X					
N113B-07	D					X												
N113Bb-05	C						X											
N113Bb-06	C	X				X			X									
N113D-02	C					X												
N113D-05	C				X	X												
N113-Dd-00	C							X										
N113Dd-06	D	X				X			X	X								
N116	B	X		X														
N119	C			X														
N121	C	X			X	X				X								

United States Perfins 1902 Series - Checklist

		1902 Series Perfins - Perf. 12														Perf. 10		
Pattern	Rate	1c	2c orig.	2c rev.	3c	4c	5c	6c	8c	10c	13c	15c	50c	\$1	\$2	\$5	\$2	\$5
N130	E			X														
N131	E			X		X	X	X	X	X		X						
N148	D			X		X				X		X						
N151	E			X														
N158.5	E					X				X								
N161	C	X		X								X						
N163	E								X	X			X					
N164	C+	X		X														
N171	B	X		X														
N175B	C+	X		X														
N177I	A			X	X													
N179	A	X		X														
N182A	E	X		X		X	X											
N190	D+					X												
N191	D			X														
N192	B	X																
N202	C	X																
N204	C	X		X		X				X								
N207	D	X		X		X				X								
N211	F									X								
O001	B+	X																
O004	B			X														
O012	E				X													
O024	D	X		X	X	X												
O025	B																	
O032	E	X																
O039	E					X		X	X	X								
O040	B	X		X	X													
O052	C			X														
O053	C			X														
O068	D	X		X		X			X									
O069	C	X		X	X	X			X	X								
O070	E	X		X	X	X		X										
O074	E	X		X		X	X					X						
O075	E													X				
O076	E			X					X									
O077	D			X				X										
O078	D+			X					X									
O081	B			X					X									
O087	B+			X					X									
O091	C+	X		X			X											
O092	B			X			X											
O093	D			X	X													
P022	D+			X														
P023	C+			X						X		X						
P029	B			X														
P037	D			X			X			X								
P050	B	X		X														
P051	D			X														
P052	E			X														
P053.3	A	X																
P056-11	E									X		X						
P056-13	A									X			X					
P056-20	E								X									
P056-21	E	X		X			X			X	X	X	X	X				
P057	C			X														
P065	B	X		X														
P086	B	X																
P095	C			X														
P096.1	C+			X		X			X									
P101	D	X		X	X	X			X	X								
P103	B+				X													

United States Perfins 1902 Series - Checklist

Pattern	Rate	1902 Series Perfins - Perf. 12														Perf. 10		
		1c	2c orig.	2c rev.	3c	4c	5c	6c	8c	10c	13c	15c	50c	\$1	\$2	\$5	\$2	\$5
P109	C+			X		X				X								
P110.5	C+			X														
P111	C			X														
P112	C+			X	X		X											
P133	A			X														
P136	B+			X														
P138	E			X				X		X								
P143	C			X	X	X		X		X								
P150	E			X	X			X	X	X								
P159	C	X		X			X	X	X									
P174A	D	X		X			X			X								
P184	C	X		X														
P185A	C									X								
P199	E	X		X	X	X	X	X	X	X								
P203	D										X	X						
P214	C	X		X		X	X			X								
P222	C			X		X		X		X								
P227	E					X												
P231	B+							X										
P239	C+			X														
P248	D+	X		X	X	X	X					X						
P252	C	X		X		X	X	X	X			X						
Q000.5	B+			X														
Q000.6	A				X					X		X						
Q003	E	X		X														
Q005	E			X														
Q006	D+											X						
Q008	B			X														
Q010	D									X								
R000.5	A			X														
R002	E			X														
R003	B+			X						X								
R003.7	C			X	X				X				X					
R003.8	D					X												
R004	B			X														
R006	D	X		X		X												
R007	C	X																
R011	B+			X							X							
R018	B			X														
R019	A	X																
R026	C	X		X		X												
R037	B			X														
R042	B			X														
R048	B	X		X														
R049	B			X														
R052	C			X														
R054	D+	X		X				X										
R061	B+			X														
R069	C			X														
R074	D+	X		X	X	X				X								
R075	D	X		X	X	X		X										
R085	A	X																
R086A	C	X		X														
R086.3	D	X		X														
R087	E	X		X		X	X			X								
R087.5	D	X		X														
R088	C			X		X				X								
R089	C+			X														
R094	E	X		X	X													
R094.4	B	X		X														
R096	B	X		X						X								
R099	C+	X		X														

United States Perfins 1902 Series - Checklist

Pattern	Rate	1902 Series Perfins - Perf. 12														Perf. 10		
		1c	2c orig.	2c rev.	3c	4c	5c	6c	8c	10c	13c	15c	50c	\$1	\$2	\$5	\$2	\$5
R103	E	X		X				X					X	X				
R104	C			X														
R109	C	X		X														
R116	B			X	X		X	X					X					
R116.5	B	X		X			X											
R117	C			X						X								
R119	D+	X							X									
R121A	E			X		X		X	X								X	
R124	C			X		X	X	X										
R125	D+			X		X												
R137	C+	X		X	X													
R138	E	X		X														
R140	C			X														
R141	E										X							
R142	C+			X	X			X	X			X		X				
R148	B			X														
R149I	A	X		X														
R151	C	X		X														
R152	D	X		X	X						X							
R159	C			X						X								
R162	C+			X														
R163	D+			X			X		X									
R167	B			X														
R167A	A	X		X														
R173	C+	X		X		X	X											
S006	C+	X		X														
S007	B	X		X		X												
S008	D	X						X										
S011	C			X														
S014	D+	X		X	X													
S018	D+			X		X		X	X									
S021	C+	X		X			X											
S024	B			X							X							
S026	D+	X		X		X												
S029	E	X		X														
S034	D			X														
S039.5	A			X														
S046.3	B			X														
S049	C+			X	X			X										
S055.5	A			X														
S057	B			X														
S058	D+			X														
S060	D+			X														
S064	C+			X														
S069	C+	X		X	X	X		X	X									
S071	C+				X													
S076	C			X														
S078	E			X	X	X			X									
S082	C+			X														
S087	B			X														
S089	B			X														
S092	D+	X		X	X	X			X									
S095	B			X														
S107	D			X														
S112	D+			X														
S112A	B	X		X														
S128.3	A	X																
S129	C			X														
S130	C+	X																
S131	E	X		X														
S138	D	X		X	X	X	X	X	X	X								
S162	E										X							

United States Perfins 1902 Series - Checklist

Pattern	Rate	1902 Series Perfins - Perf. 12															Perf. 10	
		1c	2c orig.	2c rev.	3c	4c	5c	6c	8c	10c	13c	15c	50c	\$1	\$2	\$5	\$2	\$5
S164	B	X		X														
S167	E							X										
S170	E	X		X				X										
S170A	E	X		X														
S171	B	X																
S171.5	A	X		X														
S172	D			X					X									
S176	D			X														
S177	B	X		X														
S177.5	A			X														
S180	D+			X		X			X									
S184	C+	X		X	X			X	X	X								
S190	D+	X		X														
S195-19	C	X		X	X				X	X								
S195-22	B+	X																
S195-30	D			X														
S195-31	B			X														
S195-40	D	X		X														
S195-44	C			X														
S195-44A	B			X														
S195-51	C			X														
S195-52	D+			X														
S195-60	D			X					X									
S195-63	B			X														
S197	B+			X														
S198	C	X		X		X				X								
S199	B			X		X												
S201	C	X		X						X								
S203	D+	X		X		X		X	X									
S206	B	X		X														
S215	F	X		X		X	X			X			X					
S217	C+	X																
S219	C+			X														
S224	D+			X														
S225	C+	X		X														
S228	B	X		X											X			
S233	F			X		X		X		X			X	X				
S235	C	X																
S235.5	B+					X												
S237	C+			X														
S242	B			X														
S253	B			X	X	X				X								
S266	D+	X		X		X		X										
S267	C				X	X												
S272-00	C			X	X	X				X	X	X		X				
S272.13	C+			X														
S272-14	B			X														
S272-15	C									X	X							
S272-16	B+				X													
S272-17	A			X														
S272-19	D			X														
S272-20	A			X														
S273	D+			X		X												
S280	D			X														
S287	F	X		X		X												
S288	D	X		X		X		X	X	X								
S292	C	X		X						X								
S297	D	X		X		X				X								
S299	B	X		X														
S300	B+	X		X														
S301	C	X				X	X											
S302	C			X														

United States Perfins 1902 Series - Checklist

Pattern	Rate	1902 Series Perfins - Perf. 12															Perf. 10	
		1c	2c orig.	2c rev.	3c	4c	5c	6c	8c	10c	13c	15c	50c	\$1	\$2	\$5	\$2	\$5
S303	B			X														
S309	C			X														
S314	C	X		X														
S322A	C	X		X		X												
S326	D			X		X												
S328	E	X		X	X	X	X	X	X	X	X							
S329	B									X								
S330	C+	X		X			X			X								
S333	B			X														
S334	B			X														
S337	B	X		X														
S338-11	D	X		X		X	X	X		X								
S338-17	D			X														
S338-18	C			X								X	X					
S338-19	D			X									X					
S338-20	D			X	X	X				X								
S344	D											X						
S346	B			X														
S350	C+	X		X														
S352	E			X		X				X								
S356	B	X		X														
S364	B			X		X				X								
S367	B			X		X				X								
T012	E			X						X								
T014.8	C+	X		X	X	X	X											
T024	E					X												
T028	E	X		X	X	X	X			X								
T032	B+	X		X														
T041	B			X	X	X				X								
T042.5	C+			X		X												
T043.5	D			X		X		X		X								
T048	C+			X														
T050	B			X					X									
T051	C	X		X														
T059	C+					X	X		X		X							
T068	D	X		X	X		X			X	X							
T076	D	X		X		X			X									
T079	B	X		X														
T081	F	X																
T081D	D	X					X											
T083	C									X								
T086	D	X		X	X				X									
T087	C			X	X					X		X						
T089	B			X														
T091	D			X														
T096	C	X																
T103	B			X														
T104	B			X														
T106	E			X														
T107	B			X														
T109.5	B+	X		X		X				X								
T122	D+	X		X														
T124	D			X														
U006	B+			X														
U013	C+			X		X					X	X						
U014	E			X														
U019	D+			X		X												
U026	A	X																
U027	C+			X														
U050	D+			X				X										
U051	A			X														
U052	C	X		X														

United States Perfins 1902 Series - Checklist

Pattern	Rate	1902 Series Perfins - Perf. 12															Perf. 10	
		1c	2c orig.	2c rev.	3c	4c	5c	6c	8c	10c	13c	15c	50c	\$1	\$2	\$5	\$2	\$5
U060	E	X		X		X	X			X								
U064	C					X	X											
U072	D+	X				X												
U073	E	X				X	X											
U075	D	X		X														
U079	C							X										
U082-01	E												X					
U083	D			X														
U089	D+	X		X		X				X								
U091	C	X	X	X		X		X		X		X	X					
U099.7	D	X		X	X	X		X		X								
U103	D	X		X		X												
V001.5	E	X		X														
V011	C+	X		X														
V017	D+				X					X								
V022	C			X														
V026	D+									X								
V028	E				X													
V029	E	X		X			X					X	X					
V029.5	D+						X						X					
V030	C			X														
V031	D			X														
W007-00	E	X		X	X	X		X	X	X		X	X					
W007-03	E					X	X			X		X	X					
W007-04	E			X		X		X	X	X								
W007-09	E			X		X	X		X	X								
W007-10	C+			X														
W007-11	E			X	X			X	X	X		X	X					
W007-12	D+	X		X				X										
W012	F	X		X		X				X								
W013A	C	X		X		X	X			X								
W016.5	B	X																
W018	A			X														
W019	D			X														
W021	D					X		X										
W022	C	X		X		X												
W023	C			X			X											
W036.5	C+			X														
W039	E										X							
W046	B+			X														
W058	C+			X														
W065	A			X														
W069	E																	X
W070	B							X										
W071.3	B	X			X		X			X		X						
W072.01B	D+												X					
W072.65	C	X					X											
W076	E			X														
W077	D	X		X														
W080	E	X		X	X		X	X	X	X	X	X	X					
W083	C	X		X			X		X									
W084	E				X													
W091	C	X		X			X											
W096	C+			X														
W098	B			X														
W109	C+			X														
W112	E	X		X						X								
W117	C+			X		X												
W125	C	X		X	X				X	X								
W127	B			X														
W129	C	X		X														
W133	C	X																

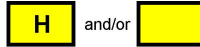
United States Perfins 1902 Series - Checklist

Pattern	Rate	1902 Series Perfins - Perf. 12														Perf. 10		
		1c	2c orig.	2c rev.	3c	4c	5c	6c	8c	10c	13c	15c	50c	\$1	\$2	\$5	\$2	\$5
W134	B			X														
W146.5	C			X														
W147	D										X							
W149	D			X	X	X		X		X	X	X						
W152	D	X																
W157	C			X														
W158	D	X		X				X										
W162	C			X	X	X		X										
W167	B			X														
W171	B					X												
W173	D											X						
W188	B			X				X										
W190	A																	
W190.5	A			X														
W193	C	X							X									
W195	C+	X		X		X												
W195.5	B			X														
W197	F				X						X							
W210	B			X														
W211	C+			X														
W214	C+			X														
W215	C			X														
W218	C+	X		X		X			X									
W220	B			X	X	X				X								
W225	B			X														
Y008	D			X														
Y010	C+			X														
Y011	D	X		X	X	X	X	X	X									
Y013	E	X				X												
Z001	E			X		X												
Z001A	D	X		X														
No. 03	D	X		X				X	X	X								
No. 04	C+							X		X								
No. 05	B							X										
No. 12	F																	X
No. 29	C			X														
Des. 01	D+	X																
Des. 07	C				X													
Des. 09	C	X		X					X	X								
Des. 14	E							X	X	X		X						
Des. 16	B			X														
Des. 19	B	X		X				X										
Des. 21	C+	X			X													
Des. 23	B	X		X								X						
Sum =		456	6	959	186	252	223	161	153	282	60	88	59	22	7	2	18	8

The following perfin patterns are known to exist on 1902 Series definitive stamps. However, there is currently no denomination data available.
A046C, A096, A073.5, C177, C178, F014, H100, I002, I043.7G-03, J169, L048.5, L055-04, L055-05, L148.51, M307, O024.3, O099.5, P184.2, S167.5, S258
S272-18, W120, W125A, Z001.5

United States Perfins 1902 Series - Checklist

CHECKLIST CUSTOMIZATION



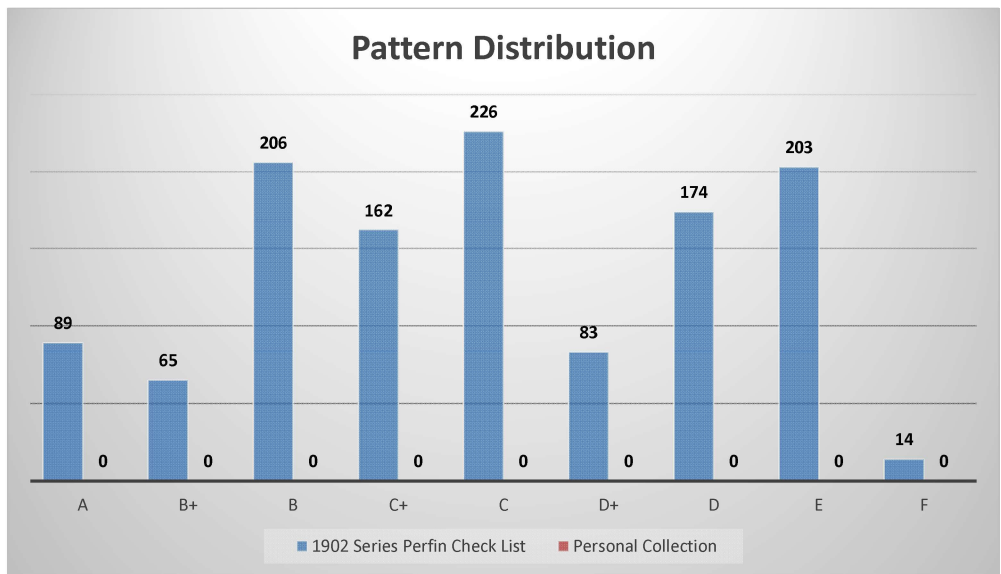
The 1902 Series Perfin Checklist may be easily customized to identify the patterns and stamps that you have in your personal collection.

1. Enter **one or two** different letters in the above yellow boxes or none if you do not wish to use this feature. An example would be using a "H" to identify the stamps that you have. The choice of letter(s) is yours!
2. In the "1902 Series Perfin Checklist" tab simply replace the "X's" with the above letter(s) for the stamps that you have in your collection.
3. The charts and graphs below will automatically populate and update as you make entries.
4. For new finds, enter your letter in the appropriate blank field. This will change the total counts.

1902 Series Perfin Patterns

Number of Patterns
for Each Rating

Pattern Rate	<i>Checklist</i> <i>Personal</i>	
	No. of Patterns	No. of Patterns
A	89	0
B+	65	0
B	206	0
C+	162	0
C	226	0
D+	83	0
D	174	0
E	203	0
F	14	0
Total:	1222	0



Member Example:

